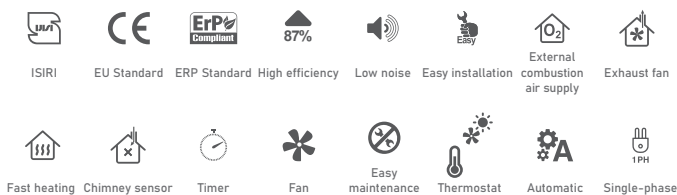
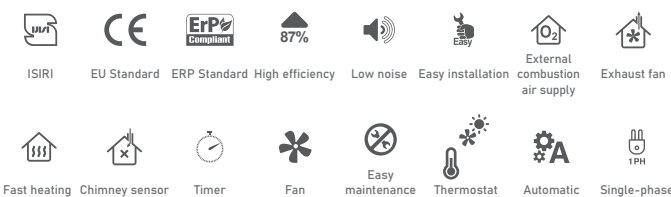


# Gas-Fired Unit Heater

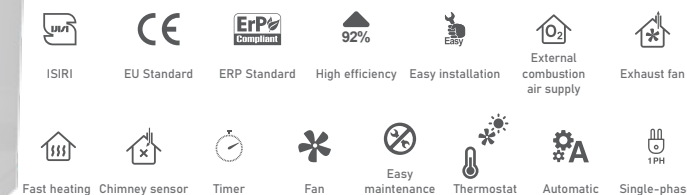
Design according to EN1266 and EN1020



**GH0618**



**GH0825**



**GH0845**

**Now, We Will Warm Your Space Fast And Safe**

## Features

- High Safety Operating
- High Thermal Comfort
- Fast Space Heating

- High Thermal Efficiency
- Compact Size

**Office:** No.58, Nategh Noori St. (Zomorod), Golnabi St., Pasdaran Ave.,  
Tehran, IRAN.

**Sale:** (+9821) 61444

**Customer Services:** (+9821) 61445

 [www.energy-ind.com](http://www.energy-ind.com)

 [energy.ind](https://www.instagram.com/energy.ind)



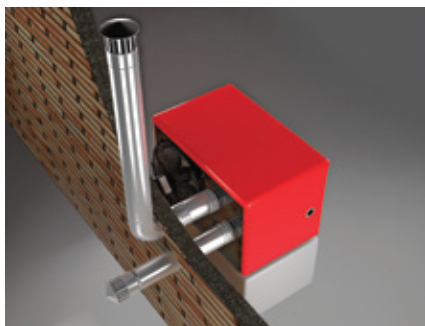
TDS:020 / 01

## Types Of Installation

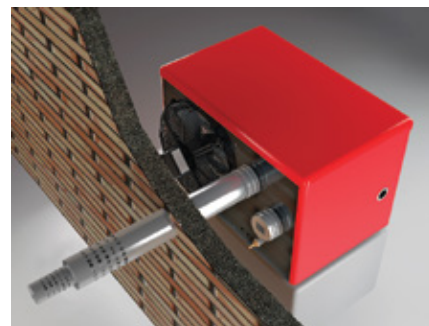
- Exit combustion products from flue and combustion air supply from inside (B22 type)
- One path combustion air supply from the outside space, and another path combustion products leaving the heater to outside space (C52 Type)
- Combustion air from the outside, simultaneous with the exit of combustion products (co-axial flue pipe) (C12 type)



(B22 Type)



(C52 Type)

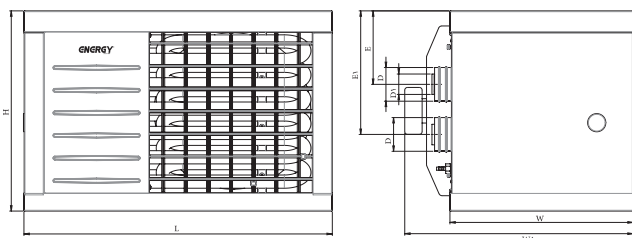


(C12 Type)

## Technical Specifications

Specifications		Unit	GH0845	GH0845L	GH0825	GH0825L	GH0618	GH0618L
Heat Input		kcal/h	45000	45000	25000	25000	18000	18000
Thermal efficiency		(Net-Groos)	92% - 84%	92% - 84%	87% - 81.5%	87% - 81.5%	87% - 81.5%	87% - 81.5%
Fuel Consumption		Natural Gas(m³/h)	4.8	-	2.6	-	1.9	-
Gas pressure (m bar)		Liquid Gas (kg/h)	-	3.7	-	1.5	-	1
Air Flow		m³/h	5300	5300	2500	2500	1500	1500
The amount of air projectile (m)		m	12	12	6	6	4	4
Heating Space (Approx.)		m³	700-900	700-900	400-700	400-700	200-360	200-360
Electrical		A - v - ph	1 - 220 - 1					
Dimensions		W (cm)	54	54	53	53	49	49
		W1 (cm)	67	67	66	66	60.5	60.5
		L (cm)	100	100	89	89	76.5	76.5
		H (cm)	70	70	59	59	51.5	51.5
		E (cm)	28	28	21	21	17	17
		E1 (cm)	42.5	42.5	35.5	35.5	27	27
Flue Diameter (Co-axial)	out	D (cm)	15	15	10	10	10	10
	in	D1 (cm)	10	10	6	6	6	6
Sound volume		dB (A)	65	65	45	45	45	45
Class NOX		-	5	5	5	5	5	5
Weight (Gross)		kg	85	85	55	55	45	45

## Product Dimensions



GH 0845 - GH 0845 L



GH 0825 - GH 0825L



GH 0618 - GH 0618L

## Specifications

### Safety

- Combustion air supply from outside or inside space (optional)
- Forced draft flue with exhaust fan
- Rapid flue performance control
- Gas pressure control with solenoid valve
- The flame monitoring system
- Non-flashback
- Limit temperature control sensor
- Ensure opening air flow path in heat exchanger before starting the In-Shot burner

### Comfort

- The fast heating with proper circulation of air with axial fan
- Possibility to manual or automatic In-Shot burner control
- Low noise axial fan and In-shot burner
- Thermostatic control and low fuel consumption
- Adjustable air damper
- Delays in fan operating after burner performance

### Efficiency

- Increase Thermal surface with tubular heat exchanger
- High durability and corrosion resistance with aluminized steel heat exchanger
- High thermal efficiency with new In-Shot burner
- Ability to adjust combustion air

## Components

